

The next stage in South Africa's  
Communications Evolution



## Update on Constantia FTTh Project

Craig Carthy

# What is Fibre Optic?

- A strand of glass that transmits communication traffic (“data”)
- Speed “latency”: 200,000 km/s
  - Traffic from NYC-Sydney takes 1/12 second to transmit
- Transmission Capacity: 101 Tb/s



# Who is LinkAfrica?

- We are “Open Access” fibre optic infrastructure providers – used by all telecoms service providers
- We’re the “Carrier-of-Carriers”
- We have 2,500km deployed in:
  - Durban
  - Johannesburg
  - Ekurhuleni
  - Bloemfontein
  - Newcastle
  - Pietermaritzburg



# Why Constantia chose LinkAfrica

- We're SA's only Open-Access fibre infrastructure provider
- Our methods of construction are less destructive
  - We use sewer and storm water drains
- Our cost structure is materially lower
  - Best pricing today
  - Downward sloping price curve



# Why Constantia chose LinkAfrica

- Fibre to Constantia Watch control centre in Bergvliet - Free of charge
- Fibre feeds to LPR & CCTV camera poles at R500/pole/month
- Streaming of CCTV/LPR feeds
- Growth of our fibre network into adjacent suburbs
  - Bergvliet
  - Meadowridge
  - Tokai
  - Hout Bay
  - Rondebosch
  - Claremont



# So – What's the delay?

- A mutually beneficial relationship is important to us
- City defined a process to allow LinkAfrica to use the sewers
  - Technical compatibility
  - Payments by LinkAfrica
  - Legal Agreement
  - Public Participation Process
  - Notifying 24 sub-councils
  - Approval of full council



# Where are we now?

- Technical compatibility - ✓
- Payments by LinkAfrica - ✓
- Legal Agreement - ✓
- Public Participation Process - WIP
- Notifying 24 sub-councils - WIP
- Approval of full council – 9 Dec '15
- Backhaul/traffic evacuation - ✓



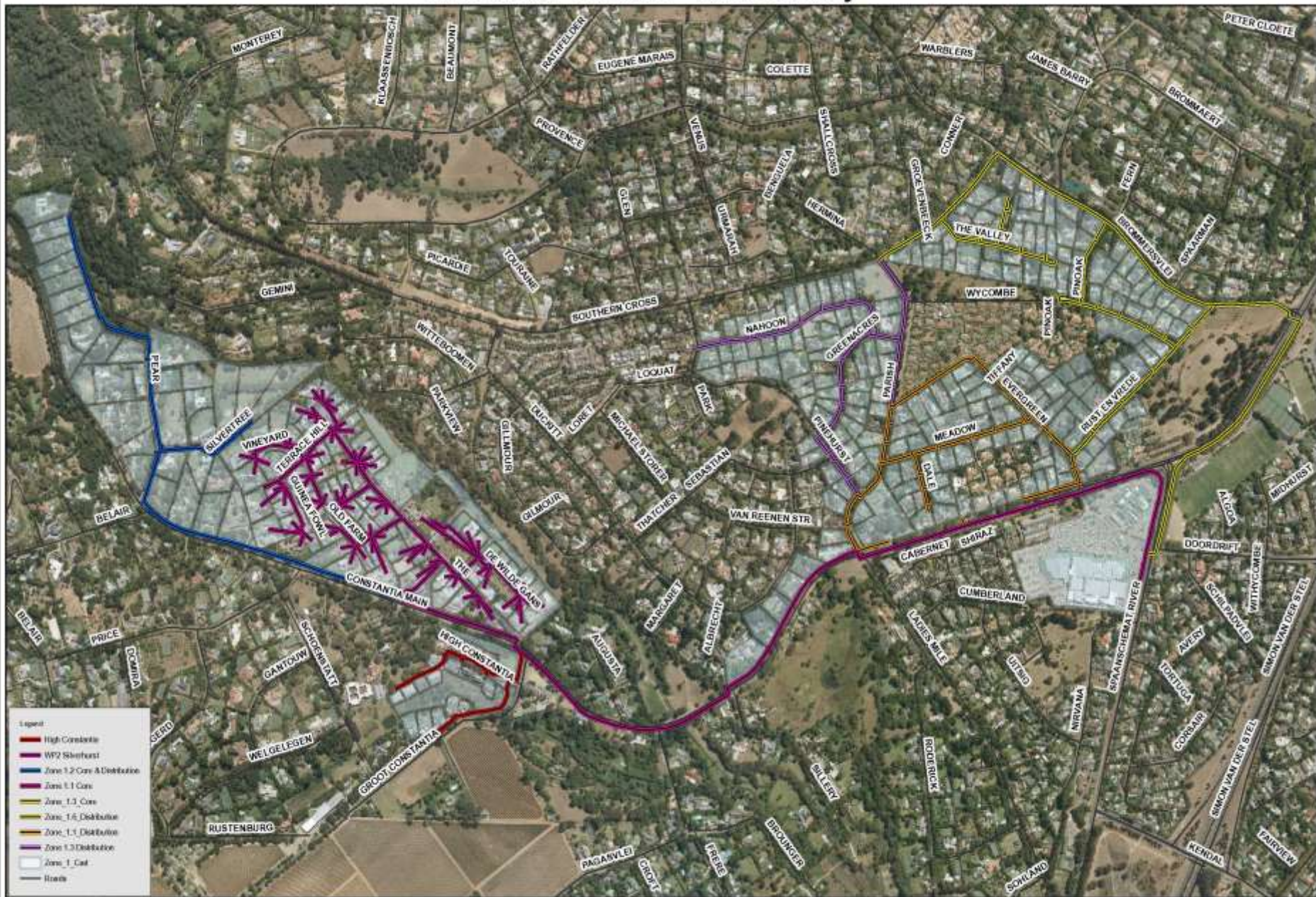
# Every cloud has a .....

- Will connect a limited number of homes in 2015 (by digging)
- The Constantia Fibre initiative started a flurry of similar projects
- Telkom was catalysed into action
- Constantia will be spoilt for choice at the end of the day





# Constantia - Zone 01 - 2015 Delivery



- High Constantia
- W92 Silverfont
- Zone 1.2 Cars & Distribution
- Zone 1.1 Cars
- Zone 1.3 Cars
- Zone 1.6 Distribution
- Zone 1.5 Distribution
- Zone 1.3 Distribution
- Zone 1\_Cat
- Roads





SEARCH by LOCATION



The areas highlighted for fibre are currently in the Fibre to the Home or Business (FTTH / FTTB) footprint and the respective Telkom fibre services offerings are available in these areas.

**FTTH / FTTB Available**

**FTTH / FTTB Planned**

